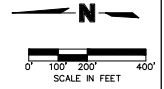


LUPTON VILLAGE COMMERCIAL METROPOLITAN DISTRICT



olsson
1425 Raleigh Street
Suite 400
Denver, CO 80204

NOTE
THIS DOCUMENT HAS BEEN
PREPARED BY OLSSON ONLY FOR
REVIEW BY REGULATORY
AGENCIES AND OTHER
PROFESSIONALS, AND IS SUBJECT
TO CHANGE. THIS DOCUMENT IS
NOT TO BE USED FOR
CONSTRUCTION.

OLSSON ASSUMES NO
RESPONSIBILITY FOR EXISTING
UTILITY LOCATIONS, HORIZONTAL
OR VERTICAL, THE EXISTING
UTILITIES SHOWN ON THIS
DRAWING HAVE BEEN PLOTTED
FROM THE BEST AVAILABLE
INFORMATION. IT IS HOWEVER
THE RESPONSIBILITY OF THE
CONTRACTOR TO VERIFY THE
LOCATION OF ALL UTILITIES
PRIOR TO THE COMMENCEMENT
OF ANY CONSTRUCTION
ACTIVITIES.



Know what's below.
Call before you dig.
CALL 811 TO REPORT ANY
PROBLEMS OR CONCERNS
PRIOR TO DIGGING, GRADING OR
EXCAVATING FOR THE MARKING OF
UNDERGROUND UTILITIES.

| REV. | DATE | DESCRIPTION |
|------|------|-------------|
| | | |
| | | |
| | | |
| | | |

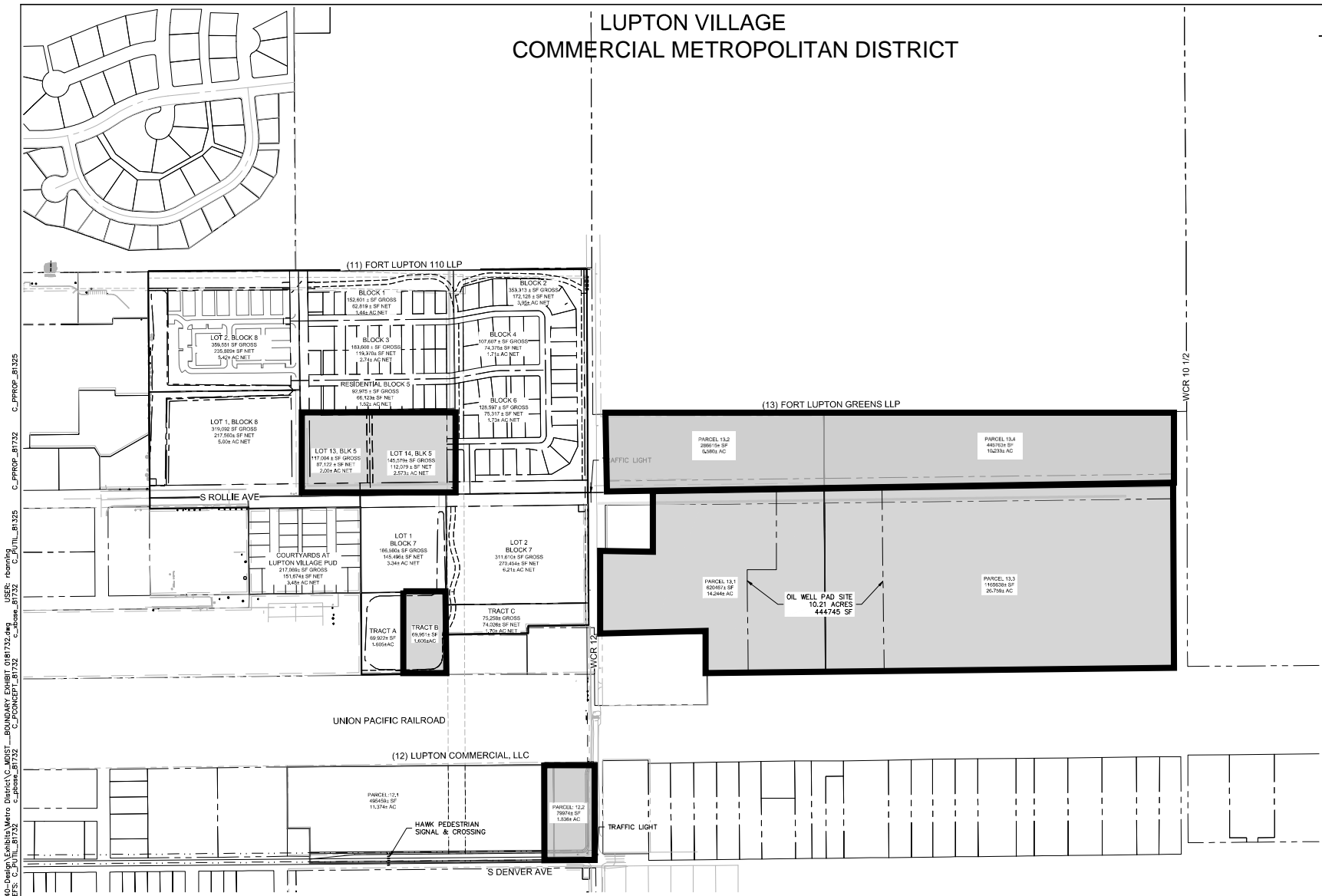
REVISIONS

METRO DISTRICT MAP
DEVELOPMENT PARCELS
LUPTON VILLAGE
METRO DISTRICTS

FORT LUPTON, CO

Drawn by: MSL
Checked by: MSL
Approved by: MSL
GACD by: MSL
Project No: 131772
Date: 01-20-2020

SHEET
A



NET AREAS EXCLUDE OPEN SPACE
TRACTS AND RIGHT OF WAY

■ METRO DISTRICT - 4
COMMERCIAL DEVELOPMENT

DWG: F:\2018\101-2000\101-1732-40-Design\Exhibits\Metro District\C-MDIST -BOUNDARY EXHIBIT 0181732.dwg
 DATE: Sep 30, 2020 7:08pm
 USER: rbenning
 C:\P\111_81732
 C:\PROP_81732
 C:\PROP_81732
 C:\PROP_81732

Lupton Village Commercial Metropolitan District
(cont.)

